

FURUNO

Marine Display
MU Series

Model MU-152HD, MU-152, MU-192HD, MU-190, MU-190V, MU-270W



MU-192HD



MU-152HD

Discover our amazing range of monitors



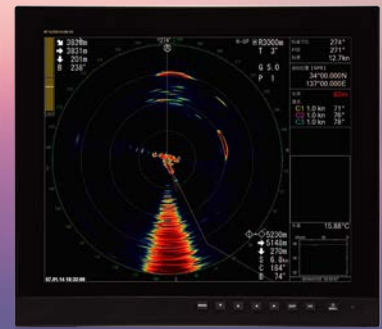
MU-152

1024 x 768 (XGA) 15"



NEW MU-152HD

1024 x 768 (XGA) 15"



NEW MU-192HD

1280 x 1024 (SXGA) 19"

Superb quality Furuno monitors for your Furuno products

- ▶ Two **NEW HD** monitors added to this extensive range: **MU-152HD** and **MU-192HD**.
- ▶ Excellent vibration and shock resistant design.
- ▶ High-brightness, high-resolution LCD for colourful video presentation even in direct sunlight.
- ▶ Various format compatible input interfaces.
- ▶ Low-profile design for a neat and beautiful console.

A nice addition for your helm

For space-saving installation and additional security, flush mount installation is available for all the MU-Display series. The display unit can be fixed from either front or rear with the flush mount kit for MU-152/152HD/192HD/190/190V/270W.



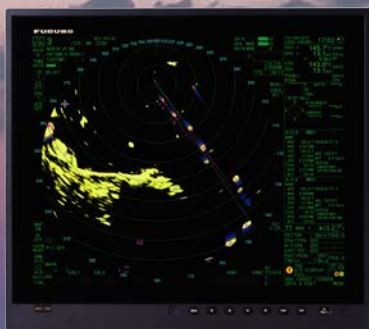
Easy
installation
with the Flush
Mount Kit

Waterproof and resistant

The MU-152/152HD/192HD has a waterproof display and is built to stand up to tough marine conditions when mounted at fly bridge console. The display can be rinsed with water for easy, worry-free cleaning.

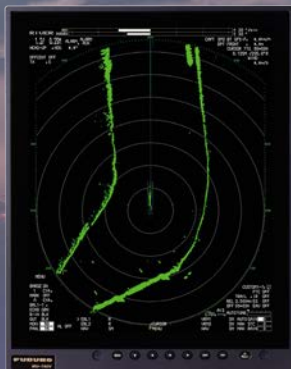


ors



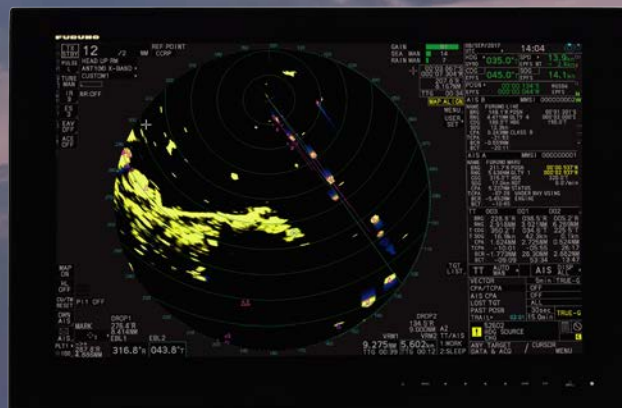
MU-190

1280 x 1024 (SXGA) 19"



MU-190V

1024 x 1280 (SXGA) 19"



MU-270W

1920 x 1200 (WUXGA) 27"

Compact and lightweight

The MU-Display series is slim in depth, light weight, and is so compact that it fits right into virtually any console.

It's space-saving design makes optimum use of your dashboard.

Optional easy to mount and adjustable bracket



The piano black glossy screen creates a stylish high-tech look on your helm

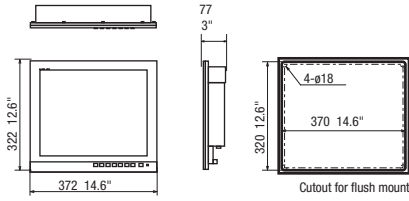
Specifications



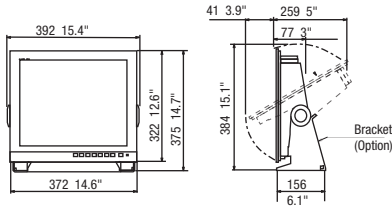
	MU-152	MU-152HD	MU-192HD	MU-190	MU-190V	MU-270W
Screen size	15"	15"	19"	19"	19"	27"
Resolution	1024 x 768 (XGA)	1024 x 768 (XGA)	1280 x 1024 (SXGA)	1280 x 1024 (SXGA)	1024 x 1280 (SXGA)	1920 x 1200 (WUXGA)
Contrast	900 : 1	2500 : 1	2000 : 1	900 : 1	900:1	1500 : 1
Viewing angle	±80°					±85°
Brightness	Max 400 cd/m ²	Max 1,000 cd/m ²	Max 1,000 cd/m ²	Max 450 cd/m ²	Max 500 cd/m ²	Max 400 cd/m ²
Interface						
Port	Analog RGB x1, DVI-D x2 Composite x3	HDMI x1, Analog RGB x1 DVI-D x1, Composite x1	HDMI x1, Analog RGB x1 DVI-D x1, Composite x1		Analog RGB x1 DVI-D x2, Composite x1	
Power Supply						
	12-24 VDC / 1.9 - 0.9 A	12-24 VDC / 2.5 - 1.3 A	12-24 VDC / 4.9 - 2.3 A	100-230 VAC / 0.5 - 0.4 A	12-24 VDC / 5.0 - 2.5 A	100-230 VAC / 0.6 - 0.4 A
Environment						
Ambient temperature	-15 °C ~ + 55 °C					
Degree of protection	IP56 (Front Panel), IP22 (Rear)				IP22 (Front Panel & Rear)	
Parts						
Standard	1. Display Unit 2. Installation Materials, Accessories and Spare Parts					
	Flush Mount Kit (for fixing at rear)	Flush Mount Kit (for fixing at rear)	Flush Mount Kit (for fixing at rear)	Flush Mount Kit (for fixing at front)	Flush Mount Kit (for fixing at rear)	Flush Mount Kit (for fixing at front)
Option		1. Cable Assembly 2. Bracket Assembly (w/knobs) 3. Hood Assembly 4. Flush Mount Kit (for fixing at front)		1. Cable Assembly 2. Bracket Assembly 3. Hood Assembly 4. Dust Cover 5. Flush Mount Kit (rear)	1. Cable Assembly 2. Bracket Assembly 3. Hood Assembly	1. Cable Assembly 2. Bracket Assembly 3. Hood Assembly 4. Dust Cover 5. Flush Mount Kit (rear)

Drawings

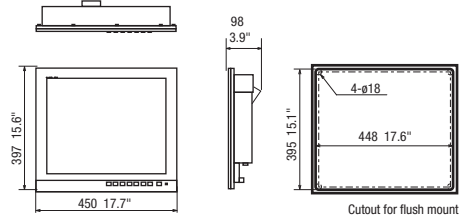
MU-152HD
Flush Mount
4.5 kg 9.9 lb



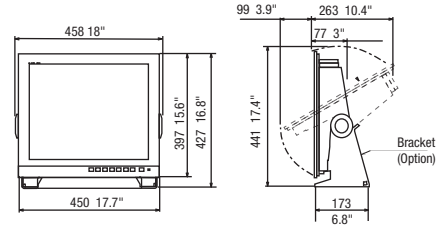
Bracket Mount
6.9 kg 15.2 lb



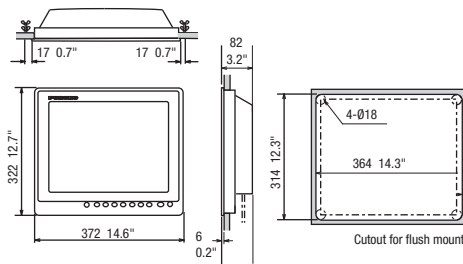
MU-192HD
Flush Mount
6.6 kg 14.5 lb



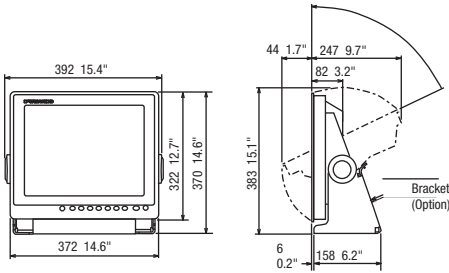
Bracket Mount
9.7 kg 21.3 lb



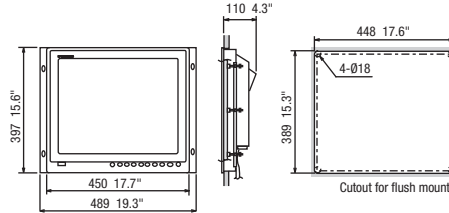
MU-152
Flush Mount 4.9 kg 10.8 lb



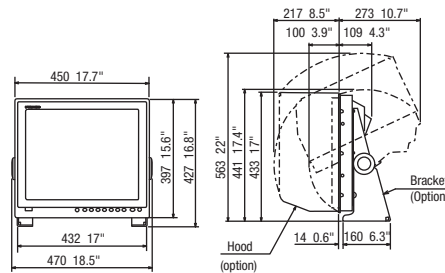
Bracket Mount 6.9 kg 15.2 lb



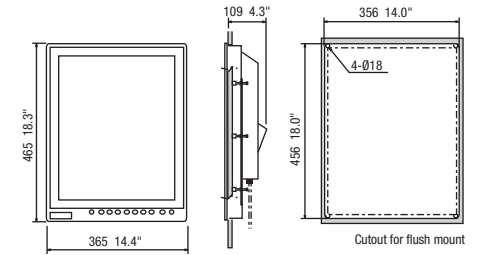
MU-190
Flush Mount 8.8 kg 19.4 lb



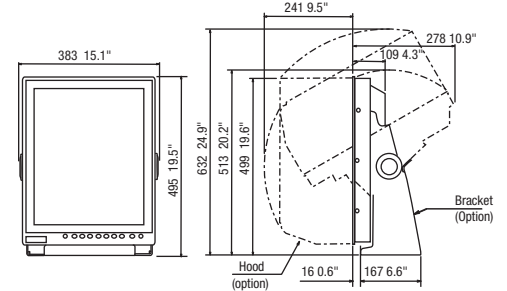
Bracket Mount 11 kg 24.3 lb



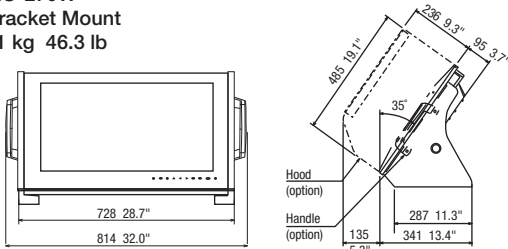
MU-190V
Flush Mount 8.0 kg 17.6 lb



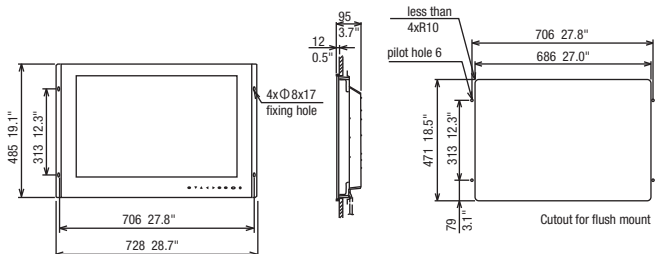
Bracket Mount 11.0 kg 24.3 lb



MU-270W
Bracket Mount
21 kg 46.3 lb



MU-270W
Flush Mount
13 kg 28.7 lb



Beware of similar products

All brand and product names are registered trademarks, trademarks or service marks of their respective holders.

SPECIFICATIONS SUBJECT TO CHANGE WITHOUT NOTICE

FURUNO ELECTRIC CO., LTD.
Japan | www.furuno.com
FURUNO U.S.A., INC.
U.S.A. | www.furunousa.com
FURUNO PANAMA S.A.
Republic of Panama | www.furuno.com.pa
FURUNO UK LIMITED
U.K. | www.furuno.co.uk
FURUNO NORGE A/S
Norway | www.furuno.no

FURUNO DANMARK A/S
Denmark | www.furuno.dk
FURUNO SVERIGE AB
Sweden | www.furuno.se
FURUNO FINLAND OY
Finland | www.furuno.fi
FURUNO POLSKA Sp. Z o.o.
Poland | www.furuno.pl
FURUNO DEUTSCHLAND GmbH
Germany | www.furuno.de

FURUNO FRANCE S.A.S.
France | www.furuno.fr
FURUNO ESPAÑA S.A.
Spain | www.furuno.es
FURUNO ITALIA S.R.L.
Italy | www.furuno.it
FURUNO HELLAS S.A.
Greece | www.furuno.gr
FURUNO (CYPRUS) LTD
Cyprus | www.furuno.com.cy

FURUNO SHANGHAI CO., LTD.
China | www.furuno.com/cn
FURUNO CHINA CO., LTD.
Hong Kong | www.furuno.com/cn
FURUNO KOREA CO., LTD
Korea
FURUNO SINGAPORE
Singapore | www.furuno.sg

PT FURUNO ELECTRIC INDONESIA
Indonesia | www.furuno.id
FURUNO ELECTRIC (MALAYSIA) SND. BHD.
Malaysia | www.furuno.my