

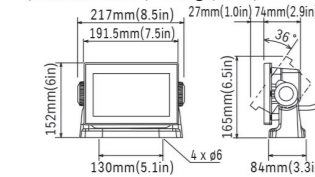
SPECIFICATIONS



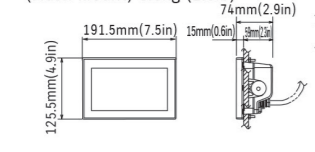
MULTI-FUNCTION DISPLAY	SMD7	SMD9
DISPLAY UNIT		
Type	7" Wide Colour TFT LCD	9" Wide Colour TFT LCD
Screen Size	154 x 85 mm	199 x 113 mm
Screen Resolution	WXGA 800 x 480 pixels	
Screen Brightness	1000 cd/m ² (typical)	
Language	English (US & UK), French, Spanish, German, Italian, Portuguese, Danish, Swedish, Norwegian, Finnish, Greek, Japanese	
Display Modes	Chart Plotter, Fish Finder, Radar*, AIS**, Instruments** (Nav Data, Engine, Wind, Fuel tank, Autopilot**, etc.), GPS status, Weather Forecast *1: Connection to the 1st Watch Wireless Radar DRS4W required *2: Connection to AIS sensor required *3: Connection to external sensors required **4: Connection to the FURUNO NavPilot-300 required	
Memory Capacity	30,000 points for ship's track and waypoints 1,000 planned routes (Max. 50 points per route) 5,000 quickpoints	
GPS/WAAS		
Receiver Type	GPS	72 channels
SBAS	SBAS	1 channel (C/A mode, WAAS)
Receiving Frequency	L1 (1575.42 MHz)	
Time to First FIX	100 s (cold start)	
Tracking Velocity	999 kn	
SBAS	WAAS, EGNOS, MSAS	
ACCURACY		
Internal Antenna	GPS	10 m Max
WAAS	WAAS	5 m Max
MSAS	MSAS	7.5 m Max
CHART PLOTTER		
Cartography	C-MAP 4D	
Alarms	Anchor, Depth, Arrival, Speed, Trip, Temperature, etc.	
RADAR		
Display Modes	Head-up, North-up* **Heading input required.	
Target Tracking**	N/A	
FISH FINDER (Built-in)		
Transmit Frequency	300 W or 600 W or 1 kW* (Transducer dependent) **Matching Box MB-1100 required for some specific FURUNO transducers	
Transducer	CW: 50/200 kHz, CHIRP: 40 to 225 kHz	
Modes	TrueEcho CHIRP™, RezBoost™, ACCU-FISH™, Bottom Discrimination**, Auto gain (Fishing/Cruising), Manual gain, A-Scope, Marker Zoom, Bottom Zoom, Bottom Lock * CHIRP dedicated transducer required. ** Dual frequency compatible transducer required.	
INTERFACE		
CAN bus/NMEA2000	1 Port	
Interface (CAN bus/NMEA2000)	Input	126992, 127245/250/251/258/489/493/497/505, 128259/267/275, 129025/026/029/038/039/040/041/285/538/540, 129793/794/798/808/809/810, 130306/310/311/312/313/314/316, 130577/830/831/832/880
	Output	126992, 127245/250/251/258/505, 128259/267/275, 129025/026/029/033/283/284/285, 130310/312/316/830/831/832
NMEA0183	1 Port	
Interface (NMEA0183) Output	AAM, APB, BOD, BWR, DBT, DPT, GGA, GLL, GNS, GSA, GSV, GTD, HDG, HDT, MTW, MWV, RMA, RMB, RMC, RTE, THS, TLL, VHW, VTG, WPL, XTE, ZDA, PFECC (SDmrk/SDtbd/SDtfl/pidat)	
LAN	N/A	
USB	N/A	
Video Output	N/A	
Video Input	N/A	
AUX I/O	N/A	
SD Card Slot	2 Slots, up to 32 GB (SD, SDHC Supported)	
Wireless LAN	IEEE 802.11 b/g/n	
ENVIRONMENT		
Temperature (IEC60945)	-15°C to +55°C	
Waterproofing	IP56	
POWER		
	12-24 VDC	
	1.0-0.5 A	

SMD7 Display Unit

(Bracket Mount) 1.1kg (2.4lb)



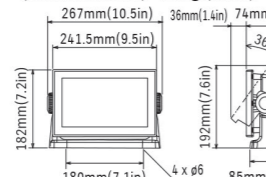
(Flush Mount) 0.9kg (2.0lb)



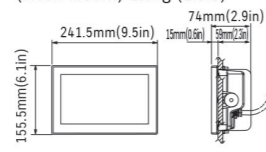
Cutout for flush mount

SMD9 Display Unit

(Bracket Mount) 1.5kg (3.3lb)



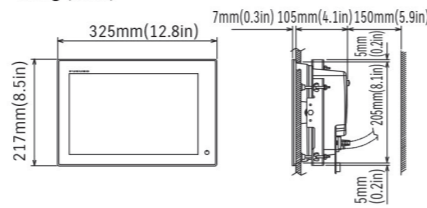
(Flush Mount) 1.3kg (2.9lb)



Cutout for flush mount

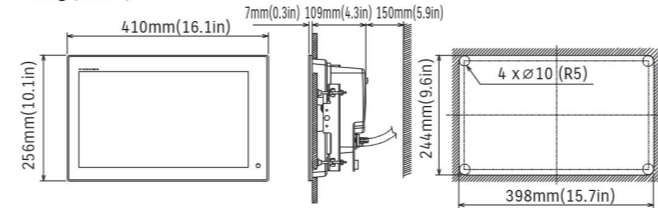
SMD12 Display Unit

3.7kg (8.2lb)



SMD16 Display Unit

4.9kg (10.6lb)



SUZUKI GB PLC

Steinbeck Crescent, Snelshill West, Milton Keynes, Bucks MK4 4A
Find us at: marine.suzuki.co.uk

Printed June 2019



MULTI-FUNCTION DISPLAY	SMD12	SMD16
DISPLAY UNIT		
Type	Colour TFT multi touch LCD	
Screen Size	12.1" Wide	15.6" Wide
Screen Resolution	WXGA 1280 x 800 pixels	FWXGA 1366 x 768 pixels
Screen Brightness	1300 cd/m ² (typical)	
Language	Chinese (simplified Chinese Characters), Danish, English (US & UK), Finnish, French, German, Greek, Italian, Japanese, Norwegian, Portuguese, Russian, Spanish, Swedish	
Display Modes	GPS/WAAS/RADAR: Course plot, NAV data, Radar Chart Overlay, Head-up, North-up (heading data required), Fish Finder: ACCU-FISH™, A-scope, Auto (Fishing/Cruising), Bottom Discrimination, Others: Weather Forecast, Digital switching, Marine Audio	
Memory Capacity	30,000 user points, 30,000 points for ship's tracks, 200 planned routes (500 points per route)	
GPS/WAAS		
Receiver Type	GPS	56 channels
SBAS	SBAS	1 channel (C/A mode, WAAS)
Receiving Frequency	L1 (1575.42 MHz)	
Time to First FIX	100 s (cold start)	
Tracking Velocity	999 kn	
SBAS	WAAS, EGNOS, MSAS	
ACCURACY		
Internal Antenna	GPS	10 m Max
WAAS	WAAS	3 m Max
MSAS	MSAS	7 m Max
CHART PLOTTER		
Cartography	MapMedia mm3d chart (C-MAP/Navionics/NOAA)	
Alarms	Anchor Watch, XTE, Proximity, Depth, Temperature, Speed, etc.	
RADAR		
Display Modes	Head-up, North-up* **Heading input required.	
Target Tracking**	30 Targets* **Heading input required.	
FISH FINDER (Built-in)		
Transmit Frequency	50/200 kHz	
Transducer	600 W or 1 kW* **Matching Box MB-1100 required for some specific FURUNO transducers	
Modes	RezBoost™, ACCU-FISH™, Bottom Discrimination, A-Scope, Auto (Fishing/Cruising), Manual, Bottom Zoom, Bottom Lock	
INTERFACE		
CAN bus/NMEA2000	1 Port	
Interface (CAN bus/NMEA2000)	Input	059392, 059904, 061184, 060928, 065280, 126208, 126720, 126992/996, 127237/245/250/251/257/258/488/489/505, 128259/267, 129025/026/029/033/038/039/040/041/291/538/540, 129793/794/798/808/809/810, 130306/310/311/312/313/314/316/577/578/817/818/820/822/823/826/827/828/880
	Output	126992/127250/127251/127257/127258/128259/128267/128275/129025/129026/129029/129033/129283/129284/129285/130306/130310/130312/130313/130314/130316
NMEA0183	1 Integrated Output Port	
Interface (NMEA0183) Output	AAM, APB, BOD, GGA, GLL, GNS, GSA, GSV, RMB, RTE, VTG, WPL, XTE, ZDA, DPT**, DBT**, RMC**, TTM**	
LAN	1 Port (100BASE-TX)	
USB	1 Port (USB2.0)	
Video Output	1 Port (HDMI)	
Video Input	2 Ports (NTSC/PAL)	
AUX I/O	1 Port (External Event/MOB Input/Operator Fitness/Alarm Output)	
SD Card Slot	1 Slot (Micro SDXC, rear), 2 Slots Card Unit (optional)	
Wireless LAN	IEEE802.11b/g/n, Transmit frequency: 2.4 GHz band	
ENVIRONMENT		
Temperature (IEC60945)	-15°C to +55°C	
Waterproofing	IP56	
POWER		
	3.0-1.5 A	3.6-1.8 A

** Not available with DRS4DL



THE ULTIMATE OUTBOARD MOTOR



SUZUKI MULTI-FUNCTION DISPLAY PRODUCT INFORMATION



Operation Systems

NEW MULTI-FUNCTION DISPLAY

The all new Multi-Function Display offers you access to all the information you need to be assured of the Ultimate boating experience.

ULTIMATE CONNECTIVITY

With the Multi-Function Display your boat and engine can now be connected to global weather and be in touch with your surrounding environment, as well as control and operate all your other devices on your boat.

Control at your fingertips with the touch screen glass top design. Available in 7, 9, 12 and 16inch screens.



SMD16/12

SUZUKI MULTI-FUNCTION DISPLAY PRODUCT LINEUP



SMD16
16" Multi-Function Display



SMD12
12" Multi-Function Display



SMD9
9" Multi-Function Display

SMD7
7" Multi-Function Display



Part number	Description	RRP EX VAT	RRP INC VAT
34901-98L40-000	Multi-function display kit 7"	£1,582.50	£1,899.00
34901-98L50-000	Multi-function display kit 9"	£1,932.50	£2,319.00
34902-98L60-000	Multi-function display 12"	£2,607.50	£3,129.00
34902-98L70-000	Multi-function display 16"	£3,899.17	£4,679.00

KEY BENEFIT

The Suzuki Multi-Function Display gives you access to all your Suzuki engine information so you can easily and quickly see the performance of your outboard/s in one clear view.

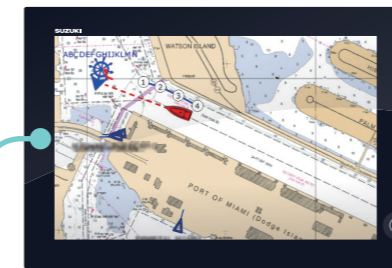
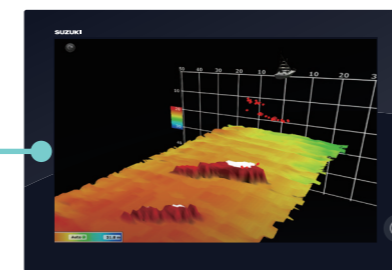
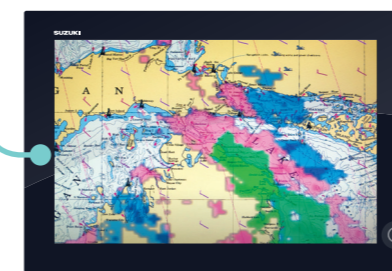


CHART PLOTTER



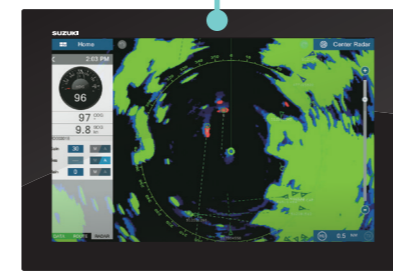
MULTI BEAM SONAR



WEATHER



DIGITAL SWITCHING



RADAR

RECOMMENDED OPTIONAL INSTRUMENTS FOR MULTI-FUNCTION DISPLAY BY FURUNO

FISH FINDER

BBDS1 SMD 16 / 12 Bottom Discrimination Sounder

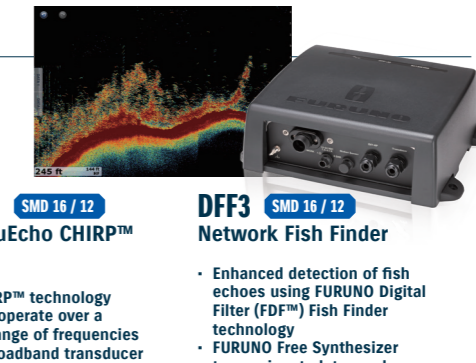
- Enhanced detection of fish echoes using FURUNO Digital Filter (DF™) Fish Finder technology
- Dual frequency, 50 kHz and 200 kHz

DFF1-UHD SMD 16 / 12 Network TruEcho CHIRP™ Fish Finder

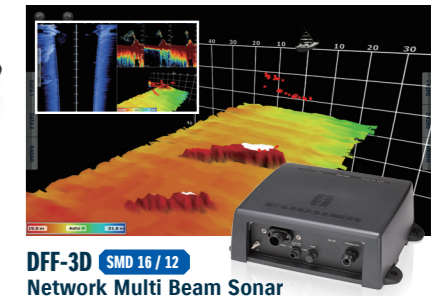
- TruEcho CHIRP™ technology
- Designed to operate over a broadband range of frequencies utilizing a broadband transducer
- Clear presentation separates bottom structure from bottom fish, and bait fish from game fish

DFF3 SMD 16 / 12 Network Fish Finder

- Enhanced detection of fish echoes using FURUNO Digital Filter (DF™) Fish Finder technology
- FURUNO Free Synthesizer transceiver to let you choose any two operating frequencies from 28 to 200 kHz



MULTI BEAM SONAR

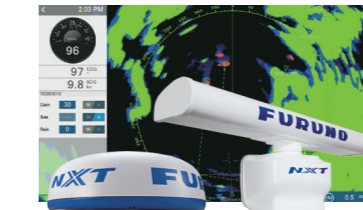


DFF-3D SMD 16 / 12 Network Multi Beam Sonar

- Sidebar detection range is up to 200 m in a 120-degree swath port and starboard direction*
- Deep water, main beam penetration directly under the boat is approx. 300 m*
- *Maximum depth depending on installation, bottom type and water conditions.

Display Modes	Cross Section, Triple/Single Beam Sounder, Side Scan, 3D Sounder History
Range Scale	Max. 1,200 m
Power Supply	12-24 VDC, 1.4-0.7 A
Transducers	800 W, 2 types (thru-hull and transom mount)

RADAR



DRS4D-NXT/DRS6A-NXT SMD 16 / 12 Solid State Radar Sensor

- Solid-State pulse compression Doppler Radar
- Revolutionary Target Analyzer™ function instantly identifies hazardous targets
- Fast Target Tracking™ and Auto Target Acquire function, up to 100 targets
- Bird Mode to find the best fishing grounds by tracking birds

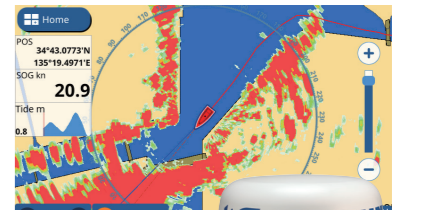
Peak Output Power	Solid-state, 25 W
Type	DRS4D-NXT: ø610 mm Radome (24"), DRS6A-NXT: 1036 mm Open (3.5")/1255 mm Open (4")/1795 mm Open (6")
Antenna Rotation Speed	24*/36/48 rpm range coupled or 24 rpm fixed * In dual range mode, speed is limited to 24 rpm.
Power Supply	12-24 VDC, DRS4D-NXT: 2.5-1.3 A, DRS6A-NXT: 9.5/5.0 A



DRS6A X-CLASS SMD 16 / 12 Radar Sensor

- Enhanced target detection, both short and long range
- Bird mode helps you identify birds, adjusting the gain and sea settings automatically for optimal visibility
- Fast Target Tracking™, takes only seconds for a speed and course vector to be displayed

Peak Output Power	6 kW
Type	1036 mm Open (3.5")/1255 mm Open (4")/1795 mm Open (6")
Antenna Rotation Speed	24*/36/48 rpm range coupled or 24 rpm fixed
Power Supply	24 VDC, 4 A



DRS4W SMD 9 / 7 1st Watch Wireless Radar

- 4 kW Radar antenna, powerful yet compact in size
- Wireless LAN, no extra wiring needed except the power source, making installation a breeze

Peak Output Power	4 kW
Type	ø488 mm Radome (19")
Antenna Rotation Speed	24 rpm
Power Supply	12-24 VDC, 2.1-1.0 A max.



AIS RECEIVER

FA-30 ALL SERIES

- Enhances navigation by receiving critical navigation information from local AIS-equipped vessels

Power Supply	12-24 VDC, 1.2-0.6 A
--------------	----------------------



VHF RADIO TELEPHONE

FM-4800 ALL SERIES

VHF Radiotelephone with built-in AIS Receiver

- Built-in AIS Receiver for situational awareness
- Built-in 72 channels GPS Receiver
- 25 W/1 W output power
- Class D DSC with Distress, Individual and All Ship calls
- 30 W PA/Loud Halter with automatic fog signals and listen back

AIS Receiver	Receiving Frequency (CN): 161.975 MHz (AIS1), 162.025 MHz (AIS2)
Output Power	Transmitter: 25 W max., 1 W at power reduction. Loud Halter/Fog Horn: 30 W max. (4 ohm)
Power Supply	12 VDC (-10% to +30%), 5.0 A max.



SATELLITE COMPASS / HEADING SENSOR

SC-33 ALL SERIES

Satellite Compass™

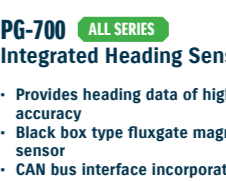
- Provides highly accurate heading data for Autopilot, Radar, and Chart Plotter

PG-700 ALL SERIES

Integrated Heading Sensor

- Provides heading data of high accuracy
- Black box type fluxgate magnetic sensor
- CAN bus interface incorporated

Heading Accuracy	0.4° rms	±1.0° (horizontal)	±1.0° (horizontal)
Heading resolution	0.1°	0.1°	0.1°
Port	NMEA2000:1 Port	CAN bus: 1	NMEA0183
Power Supply	12-24 VDC: 0.4-0.2 A, LEN11	12 VDC: 0.1 A (LEN: 3)	12-24 VDC: 120-30 mA



- Inexpensive heading sensor with the highest accuracy and stability in this class of equipment
- High stability for a solid-state rate gyroscope